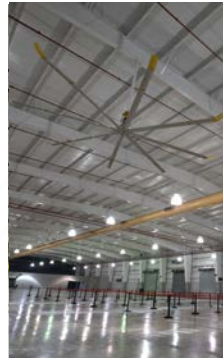
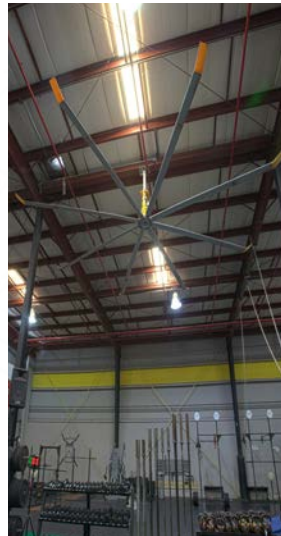
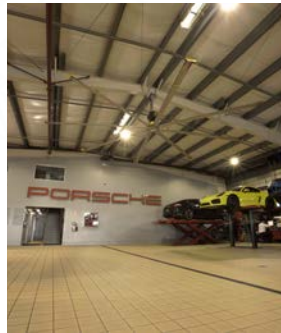
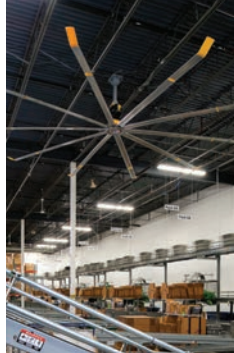




THINK YOU KNOW BIG ASS FANS?

Our full product lineup might surprise you.
Check it out inside.





Technical Industrial Sales Big Ass Fan Distributors

As a local distributor and representative of top quality HVAC products and specialties for over 30 years, Technical Industrial Sales proudly represents Big Ass Fan for Puerto Rico, the Caribbean and some areas in Latin America, providing also installation and related services.

WHAT **BIG ASS** REALLY MEANS

Specialized applications engineers and LEED-accredited design team members will help you during every step of the process. Dedicated project managers handle every job from start to finish.

That's the advantage of working directly with the manufacturer – we design, build, plan, install and guarantee every one of our products, every time. It's why Big Ass Fans is different from any other company you'll ever work with, and it's why there's just No Equal™.

OVERHEAD FANS



Get ultimate airflow while freeing up floor space. Overhead Big Ass Fans are efficient, effective and quiet, and they can help save on utility bills all year long.



Powerfoil®X3.0 ▲

Available in 8- to 24-ft diameters • SmartSense control system automatically adjusts speed to desired level • Hermetically sealed NitroSeal™ gearbox keeps contaminants out for zero maintenance • Wide shaft allows for integration of additional options • Optional LED • Wash Down version available



Powerfoil®X3.0 Plus ▲

Available in 12- to 24-ft diameters • **Powerfoil Plus Winglet adds 1.5 ft more to the diameter** • SmartSense control system automatically adjusts speed to desired level • Hermetically sealed NitroSeal™ gearbox keeps contaminants out for zero maintenance • Wide shaft allows for integration of additional options • Optional LED • Wash Down version available



Powerfoil 8 ▲

Available in 8- to 24-ft diameters • Patented airfoil system uses eight airfoils and winglets for maximum coverage area



Powerfoil 8 Plus ▲

Available in 8- to 24-ft diameters • **Powerfoil Plus Winglet adds 1.5 ft more to the diameter** • Patented airfoil system uses eight airfoils and winglets for maximum coverage area



Essence ▲

Available in 8- to 14-ft diameters, for ceilings as low as 12 feet • Optional SmartSense • Silent operation • Customizable components and color options • Damp-rated • Delivers powerful air movement to indoor or outdoor spaces • Optional LED available



Isis ▲

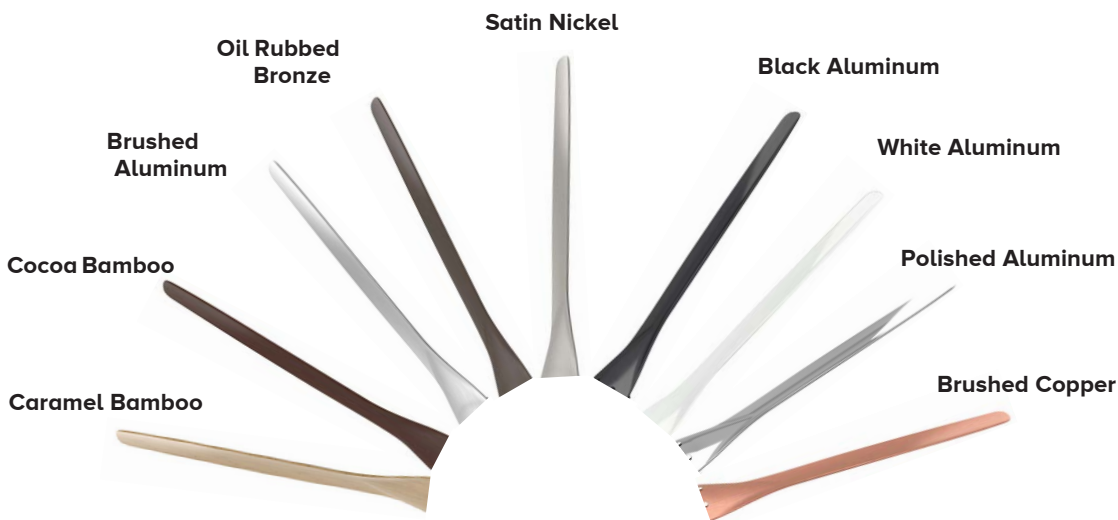
Available in 8- and 10-ft, diameters for ceilings as low as 12 feet • Silent operation • Outdoor 8-ft version available

HAIKU FANS



Haiku Luxe ◀

52-, 60- or 84-in diameters • SenseME™ technology for automatic comfort • Silent operation • Choice of airfoil, hardware finishes • 10 settings • Built from premium materials • Exceeds ENERGY STAR efficiency requirements • Patented LED optional • Assembled in the USA



We know you appreciate simplicity, ease of use and quality. By partnering with like-minded businesses, we hope to create a seamless experience when you interact with our products.



Haiku L ▲

52-in diameter • Black or white hybrid resin finish • Optional SenseME technology and Wired Wall Control • Integrated LED • Silent operation • Exceeds ENERGY STAR efficiency requirements



DIRECTIONAL FANS

Big Ass Fans aren't just for the ceiling. We have mobile, directional, portable and even misting fans that provide all the airflow you need, wherever you need it – inside, outside and even in tight corners.



Sweat Bee®

Available in 18- and 30-inch diameters • Wall, column, mobile pedestal and swivel-mount options



Pedestal Mount



Swivel Mount



Portable base with yoke mount

Portable base with 18" extension

Portable base with 36" extension



Oscillator

Yellow Jacket®

30-inch diameter • Smashingly Durable™ construction • 10 adjustable speeds • Portable, pedestal, chain, wall and column-mount options • Misting and oscillating options available



I-Beam Mount



Chain Mount

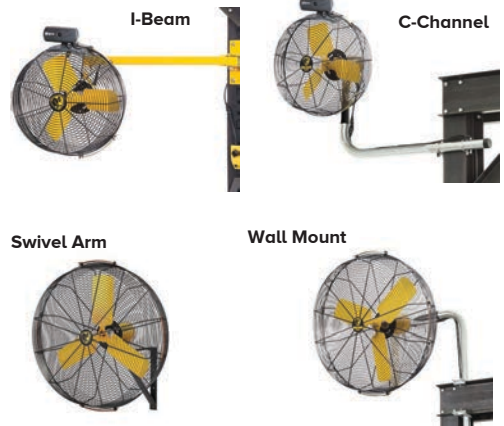


Wall Column Mount



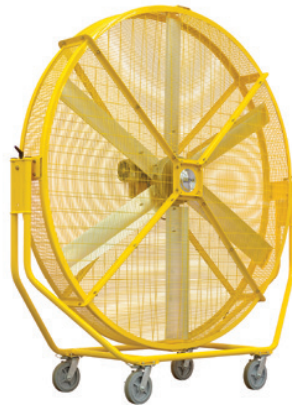
◀ AirEye

3 Diameters: 20", 24", 30" • 5 Mount Options: Pedestal, Wall, Swivel, I-Beam, C-Channel • 3 Control Options: Standard, Occupancy Sensor, Timer • Speed Adjustable • 50% more CFM per watt than traditional induction motors



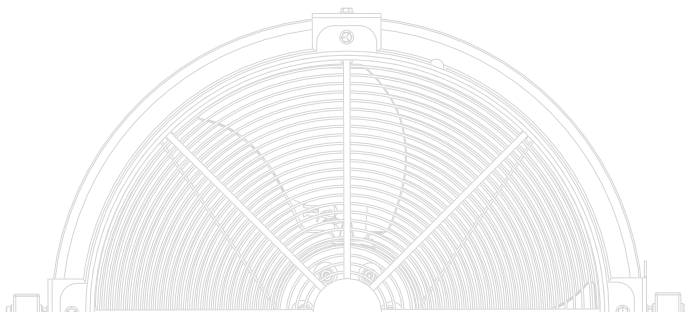
Black Jack ▼

6.5-ft diameter • Quiet, efficient direct-drive motor • Plugs into any 110 volt power supply • Comes standard with indoor/outdoor wheels • Arrives fully assembled



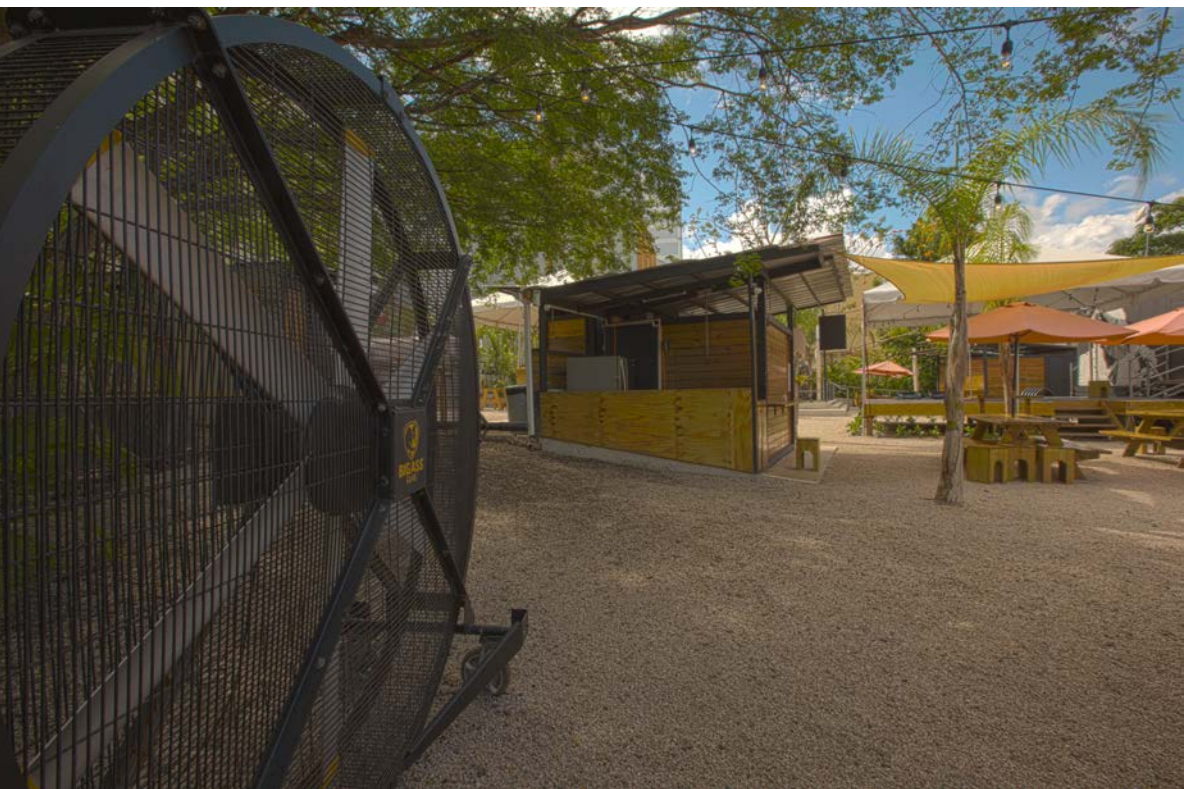
▲ AirGo®

8-ft diameter • Delivers airflow half the length of a football field • Optional all-terrain and misting versions available



Case Study

Gastronomic Park: Lote 23



PROBLEM

Lote 23 is a Gastronomic Park that offers a Puerto Rican culinary and cultural experience in a casual environment. It is located at the center of the "new" Santurce and hosts more than 10 kiosks that are distributed around the lot. Moreover, it has 4 terraces where guests enjoy diverse activities like local artisans, exercises and musical presentations. These kiosks are located in an open area without proper ventilation, thus exposing customers and employees to high temperatures created by adjacent buildings around it combined with PR's tropical climate.

SOLUTION

Cristina Sumaza, co-founder of Lote 23, already knew of the work done by Technical Industrial Sales (TIS), the exclusive distributor of Big Ass Fans in Puerto Rico. She contacted them looking for a solution to their problem. Eduardo Varón and his team at TIS recommended installing 4 Black Jack and 3 Yellow Jacket model fans strategically placed around the lot. Furthermore, given the silent operation of these fans, customers can engage in conversation as well as enjoy musical presentations without unnecessary background noise. In addition, the Black Jack fans always attract a crowd due to their style and size and visitors appreciate the opportunity to take a picture.



"In Lote 23, the change is remarkable, employees and customers express continuously their satisfaction. With the installation of these portable fans, we helped to create a fresh ambient and a nice place to enjoy."

Eduardo Varón,
Distributor (TIS), PR.

BIG ASS LIGHTS



Incredibly bright, efficient, durable and long-lasting, our LED fixtures were designed with our customers' needs in mind – from factories to fitness facilities and even the home garage.



High Bay LED ▲

Available in 20,000 and 26,000 lumen models • 4,000K and 5,000K options available for both lumen outputs

Low Bay LED ▲

Available in 10,000 and 14,000 lumen models • 4,000K and 5,000K options available for both lumen outputs

Twin High Bay LED ▲

Available in 40,000 and 52,000 lumen models
• 4,000K and 5,000K options available for both lumen outputs



The Garage Light ▲

13,000 lumens and 5,000K color temperature
• Easy, one-person installation • Perfect for workshops, basements, garages and more

LIGHT ACCESSORIES

Occupancy Sensor

Available for all fixtures • Automatic on/off saves effort and energy

Inverted Twin LED Mount

Reflects light off the ceiling • Perfect for tennis courts and fitness facilities

Lumen Maintenance Tray Options

Varying light angle options and diffused lumen maintenance trays available for High Bay and Low Bay fixtures

Emergency Battery

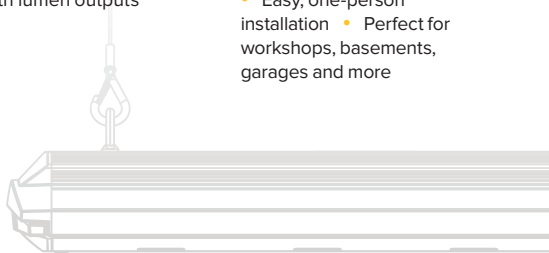
Available for High Bay, Low Bay and Twin High Bay LEDs • Allows for the fixture to turn on when power is shut off to safely help employees find an exit

Wall and Column Mounts

Available for High Bay and Low Bay LEDs • Direct light where you need it most

Backpack Configuration

Available for Twin High Bay LEDs • Cuts down on wires, requires only one occupancy sensor



Industrial

Our Big Ass Installation:

- Autoridad de los puertos/Muelle Panamericano, SJ
- Gan Eden - Santa Isabel
- Parroquia Corpus Cristi, Carolina
- La Burguette - San Juan
- Colegio Marista, Guaynabo
- Porsche, San Juan
- Lote 23, San Juan
- Gandía Group, Caguas
- Crossfit SJU, San Juan
- Mr. Sandwich , Caguas

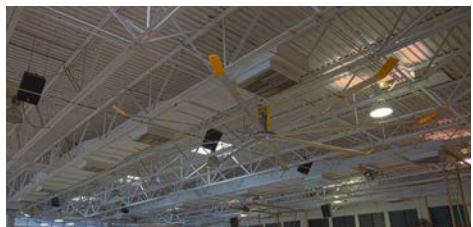
Powerfoil

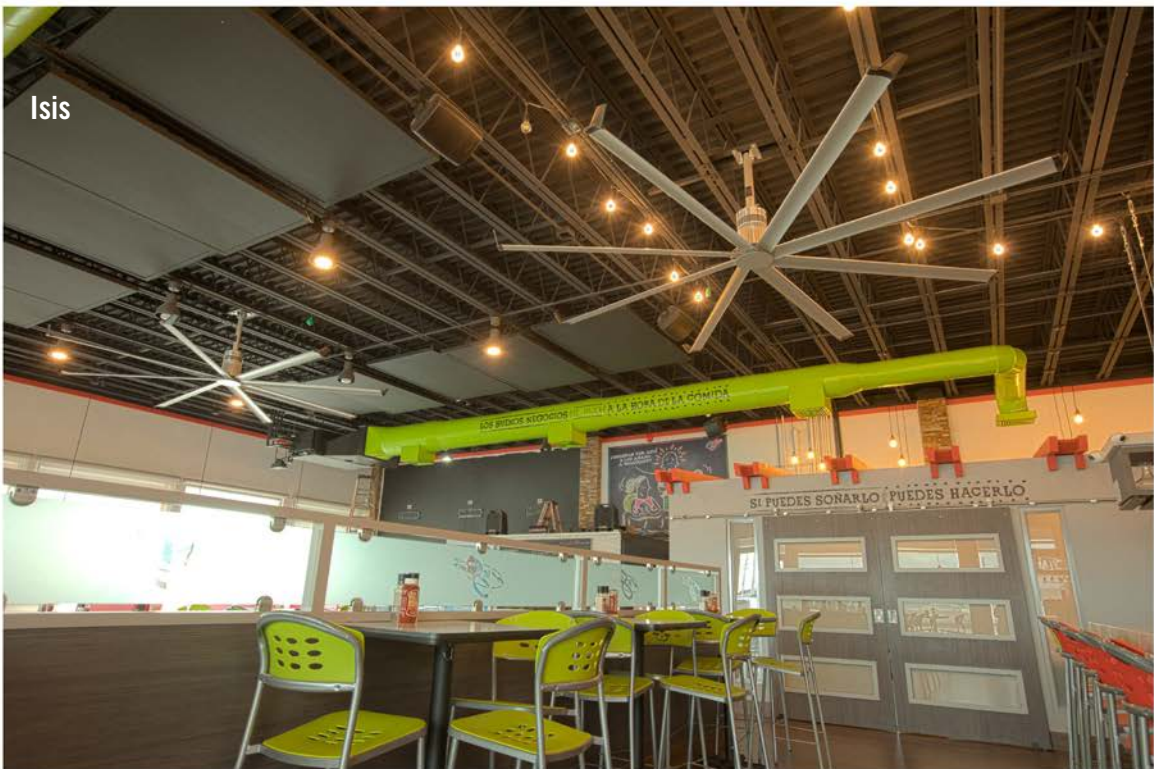


Essence



Isis





Residential

Big Ass Fan Installation



HAIKU



Essence

